

Applied Flooring

**DESIGN • SURVEY • QA/QC •
PRECISION FLOOR SYSTEMS**

WELCOME TO
**APPLIED INDUSTRIAL
FLOORING**

Delivering Canada's most advanced concrete
flooring solutions—built for warehouse
automation and built to last.

”

These aren't minor problems—they reduce your system's ROI, increase downtime, and force expensive workarounds.

Your automation is only as good as the floor it runs on.

”



FLOOR PROBLEMS ARE SLOWING DOWN WAREHOUSE AUTOMATION ACROSS CANADA



If your floor wasn't built with automation in mind, it's already costing you.

Whether you're seeing AGVs drift off track, AMRs stop mid-route, VNA trucks rattle in narrow aisles, or robots recalibrate continuously—**your floor is the silent source of failure.**

TYPICAL ISSUES WE SEE ACROSS CANADA:

- › Uneven surfaces causing **sensor misreadings** and robot instability
- › Slab curl and cracking at joints triggering **racking misalignment**
- › Excessive floor roughness and waviness leading to **vibration damage in VNA trucks**
- › Moisture migration degrading **adhesives, coatings, and finishes**
- › Gloss or reflectivity mismatches disrupting **camera-based navigation systems**



WE FIX FLOORS—AND FUTURE-PROOF THEM FOR ROBOTICS

Applied Industrial Flooring specializes in **corrective grinding, slab stabilization, and floor performance optimization** tailored to automated systems. We serve clients across Canada from **design stage to retrofits**.

Our core services include:

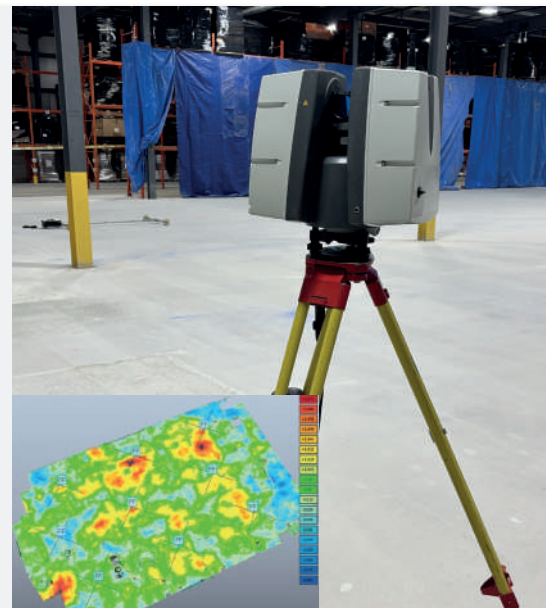
SLAB DESIGN & PRE-CONSTRUCTION REVIEW

- › Optimize rebar layout, joint spacing, and thickness based on automation use case
- › Prevent slab curl with proper detailing and mix designs
- › Align project specs with CSA A23.1, ASTM E1155, and TR34 early in planning



3D LASER FLOOR PROFILING

- › Scan with high-resolution Leica systems to detect flatness/levelness deviation (FF/FL, Fmin, DIN, TR34)
- › Produce actionable reports that tie directly to OEM floor tolerances
- › Map critical paths for AGVs/AMRs and plan targeted grinding



PRECISION FLOOR GRINDING & JOINT STABILIZATION

- › Achieve superflat standards (e.g., Fmin 75+, DM1, VDMA) for VNA or ASRS aisles
- › Eliminate vertical movement at joints with polyurea rebuilds and stabilization
- › Restore entire surfaces or narrow aisles without full slab replacement



MOISTURE MITIGATION & SURFACE CONDITIONING

- › Use moisture-tolerant coatings and systems for slabs with high RH
- › Apply vapor barriers, sealers, and fast-curing patch materials
- › Control floor reflectivity and gloss for machine vision systems



FINAL QA/QC & OEM COMPATIBILITY CHECKS

- › Validate performance against integrator specs: AutoStore, Exotec, KNAPP, HAI Robotics
- › Supply commissioning documents and warranty support
- › Support CSA, EN, ASTM, DIN compliance for audits and inspections



SYSTEM-SPECIFIC FLOOR SOLUTIONS

Automation Type

- › VNA Trucks (Fmin 75–100, DM1)
- › AutoStore / ASRS / G2P
- › AGVs / AMRs
- › Cold / Frozen Storage
- › High-Bay Racking

Common Floor Problem

- › Excess vibration, operator fatigue, poor speed profiles
- › Height mismatches, gloss/reflection sensor misreading
- › Static buildup, traction issues, guidance drift
- › Thermal cracking, delamination, high moisture
- › Curl at joints, slab displacement under point loads

Specialized Applied Solution

- › Ultra-flat grinding to TR34/Fmin + edge joint stabilization
- › Laser-verified surface alignment + gloss-balanced sealers
- › ESD-safe coatings + friction-optimized textures
- › CFIA-compliant urethane cement systems + anti-slip finish
- › Slab stabilization (chemical + mechanical) + floor scanning



BUILT FOR CANADIAN CONDITIONS. TRUSTED ACROSS ALL SECTORS.

We understand Canada's **seasonal extremes, soil types, construction practices, and local compliance** expectations. Our nationwide presence ensures responsive service and consistency.

National Coverage:

Toronto, Vancouver, Calgary, Edmonton, Winnipeg,
Ottawa, Montreal, Halifax

Standards Expertise:

CSA A23.1, ASTM E1155, TR34 (4th Ed.),
EN 15620, VDMA, DIN 15185

Trusted by Leading Integrators:

AutoStore, Exotec, KNAPP, HAI
Robotics, Jungheinrich, Linde

Proven Across Industries:

- 3PL and Fulfillment Centers
- Pharma and Clean Environments
- Cold Storage and Food Facilities
- High-Density Retail Distribution

WE HELP YOU BUILD SMART — FROM THE GROUND UP

Whether you're a **developer designing a new facility**, a **GC preparing for slab pour**, or an **owner upgrading to robotics**, we help you avoid failure by **treating the floor as part of the system**, not an afterthought.

- ✓ Engineering foresight to prevent slab issues
- ✓ Precise execution with cutting-edge tools
- ✓ Real-time QA/QC reporting and documentation
- ✓ Minimal operational disruption on retrofits
- ✓ Long-term performance—no band-aid fixes



LET'S TALK BEFORE YOU POUR OR TRANSFORM YOUR WAREHOUSE

APPLIED INDUSTRIAL FLOORING



OFFICES: • VANCOUVER • CALGARY • WINNIPEG • TORONTO
• MONTREAL • HALIFAX

YOUR FLOOR IS EITHER SLOWING YOU
DOWN—OR HELPING YOU SCALE.
LET'S MAKE SURE IT'S THE LATTER.

✉ EMAIL: INFO@APPLIEDFLOORS.COM

🌐 WEBSITE: APPLIEDFLOORS.COM

☎ (800) 824-2443

FOLLOW US

