

THE APPLIED DIFFERENCE

Applied Industrial Flooring is Canada's leading full-service concrete restoration, industrial resinous flooring and traffic coatings specialist. With over 45 years installing the strongest industrial coating solutions on the market, we are professionals at recommending exactly the system for your needs. AIF takes pride in having a reputation for excellence, relationships and company culture, and as such, we've had many of our largest clients for 20+ years.





A SCIENCE AND AN ART

Over 45 years of experience as Master Installers of the top Suppliers in the industry, we've run into every industry requirement under the sun. We truly listen to our clients needs and will educate and advise on our customer's options, all of which would meet the desired goal and budget. Not only are we certified master installers of the industry's leading coating suppliers, AIF knows how to think outside of the box. We have even developed our own proprietary systems for advanced customer needs. And if your facility doesn't fit into a box either, we'll meet your demands with a custom solution.

AIF is also differentiated by our world-class, truly end-to-end installation process. With one of the largest fleets of Diamond Plate Grinding equipment in Canada, we can prepare concrete surfaces for installation to the highest-degree of detail in half the time of other installers, a procedure that is critical to the success and lifespan of your floor system. Our staff are NACE-certified, hold the highest standard for safety, and our post-project quality assurance is superior to any other installer on the market.

SERVICES

■ Grinding, Removals and Surface Preparation

The most important part of installing a long-lasting floor is a clean foundation. Whether we are prepping your substrate for a flooring system application or removing an existing floor system.

■ Industrial Concrete Coatings and Overlayments

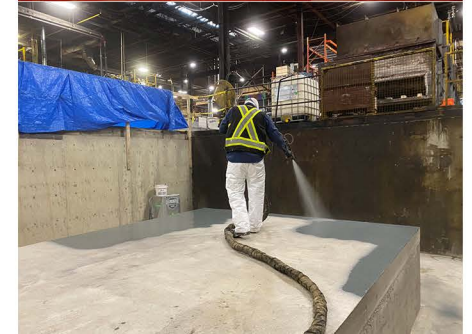
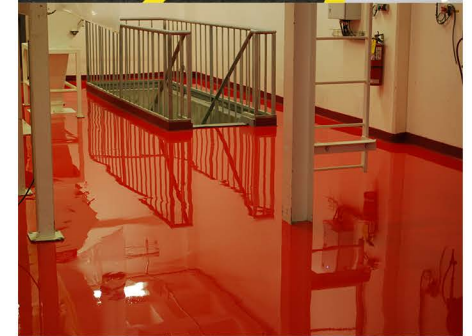
Epoxy, Ucrete, MMA, Epoxy, Polyurethane seamless, jointless flooring systems. Electrostatic Dissipating, Sparkproofing, water and chemical resistance, abrasion-resistance, antibacterial, salt-proof for winter, easy to clean, and much more.

■ Concrete Polishing

Our Diamond Grinding fleet of polishing and scarification machines is one of the largest in North America. This sheer number of machines allows us to expertly polish concrete surfaces in significantly less time than our competitors.

■ Primary/Secondary Containment System Coatings

Spill proof and leak proof industrial coatings that prevent chemicals, oil and gas from permeating your facility. Environmentally-friendly, protects facilities from damage, and keeps employees safe.



SERVICES (cont.)

■ Waterproof Traffic Membranes

Protect traffic-bearing concrete surfaces where moisture, high-use and chemicals can damage concrete and the underlying steel reinforcements. We install industry-leading systems, plus more sophisticated PUMA and MMA systems to provide an ultra-durable waterproof, and chemical-resistant surface giving your concrete it's longest lifespan.

■ Slab Stabilization/Lifting

Fix unlevel, sinking or lifting concrete from the source. We secure slabs exactly where you'd like them using a polyurethane foam that can expand to up to 20x it's size while protecting concrete floor slabs against future damage.

■ Concrete Crack Injections

Injection of a polyurethane resin into concrete cracks to fix structural foundation walls, floors, ceilings and more. Our polyurethane resin system reacts with water and expands to up to 20x its size, filling and fixing cracks from beneath the concrete's surface.



WE ARE **CERTIFIED & APPROVED**



Certifications

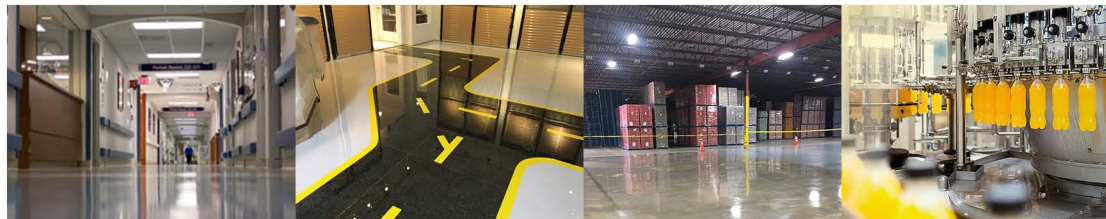


EUCLID CHEMICAL



Suppliers

REAL STORIES, **REAL RESULTS.**



View our collection of unique case studies [here](#)

Applied 
Flooring



OUR COMMITMENT TO SAFETY

Safety considerations are at the forefront of every single decision making and installation process, and we are committed to providing both a safe product, and installation process that exceeds OSHA compliant standards and regulations.

All our staff are trained in first aid and CPR. We meet monthly to ensure our safety standards are maintained, for peace of mind on every project.

Canadian Office

1275 Crestlawn Dr

Mississauga, Ontario

L4W 1A9

Phone: (416) 201-9003

Let's Connect on Social



Applied 
Flooring